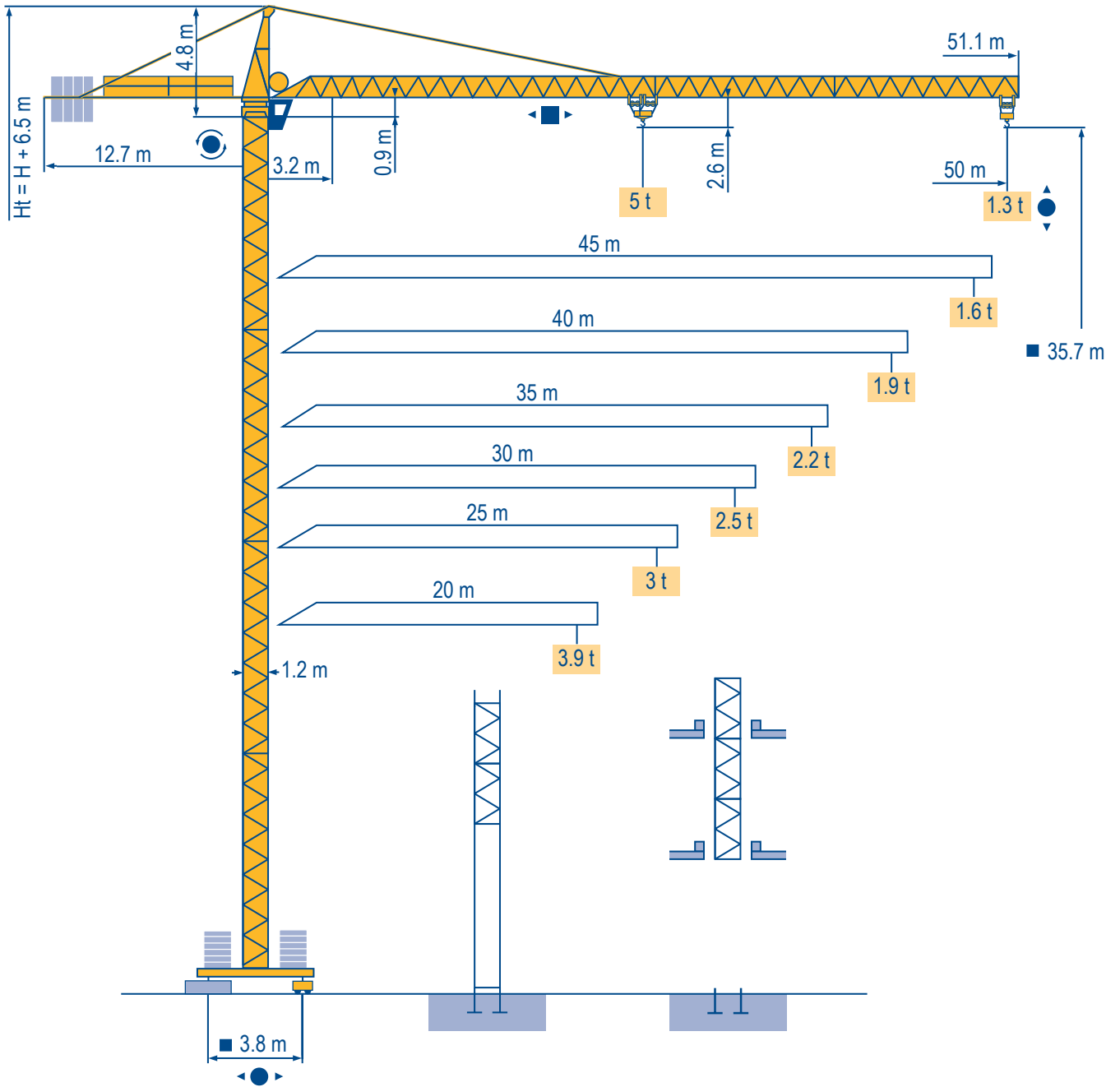


# Potain MCI85 A/B



Masts / Reactions

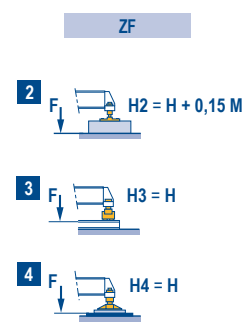
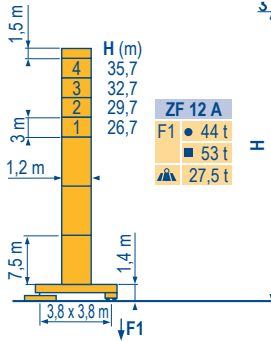
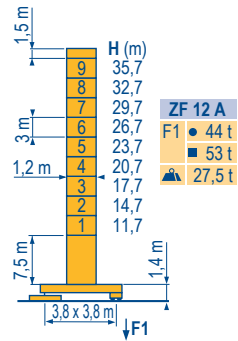
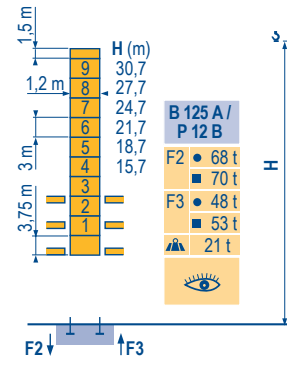
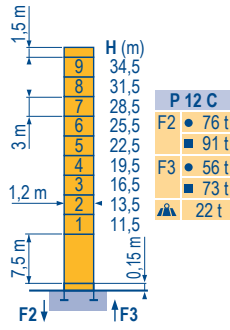
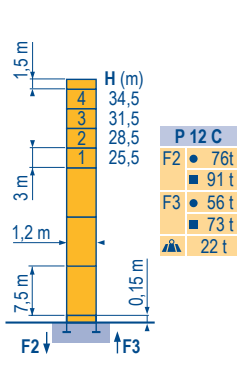
Композиции башни / Реакции

MBW 2

□ 1,2 m

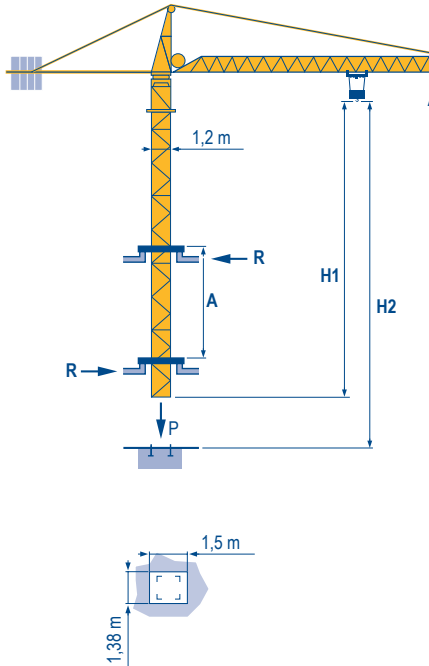


20 m → 50 m

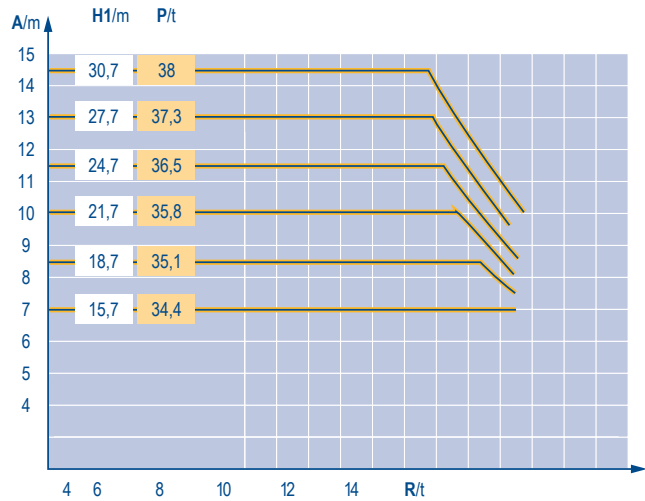


Climbing crane / Кран, ползущий внутри здания

MBW 3



B 125 A



CITY CRANE / MCi 85 A/B

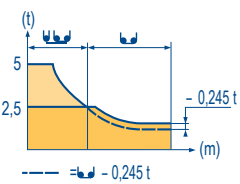
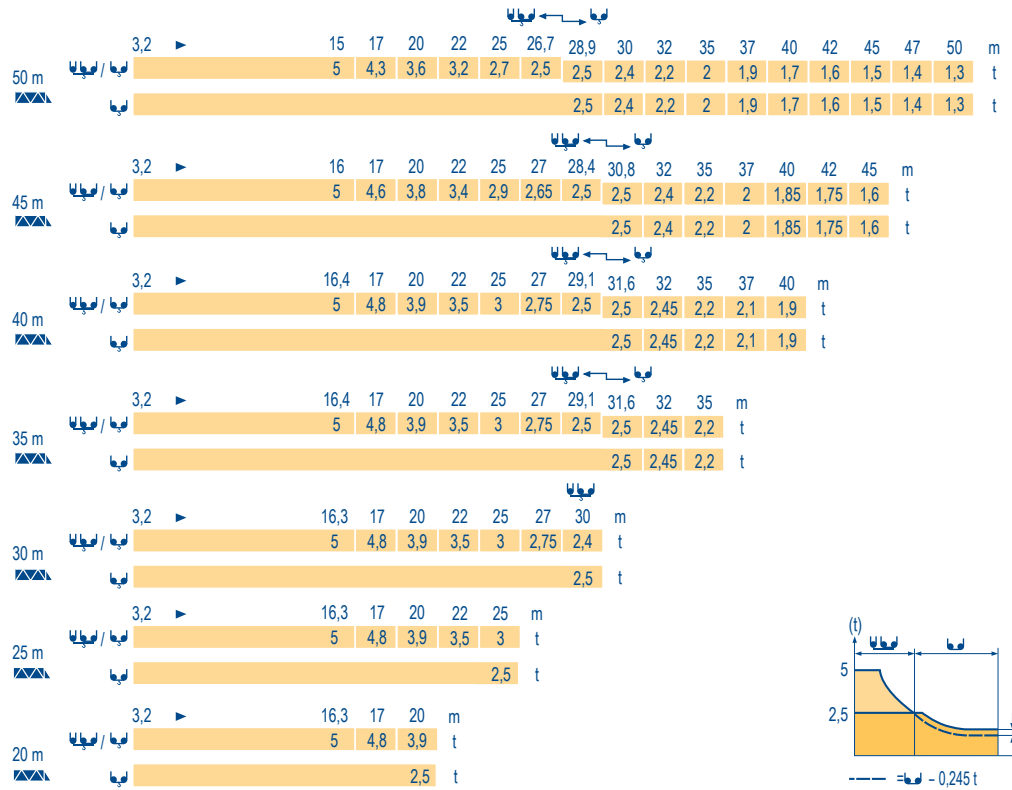
Potain

EN

- Reactions in service
- Reactions out of service
- ▲ Without load, ballast (or transport axles), with maximum jib and maximum height.
- 👁 See climbing crane

**Load diagrams**  
**Диаграммы грузоподъемностей**

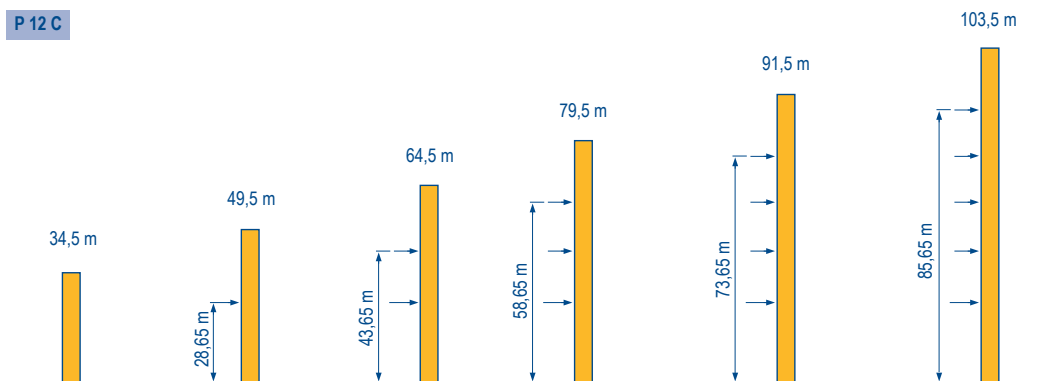
MBW 2



**Anchorage**  
**Рамки для крепления к зданию**

P 12 C

MBW 2



**CITY CRANE**  
**MCi 85 A/B**















Potain

EN

- A** Distance between collars
- H1** Crane height
- P** Crane weight (in service)
- R** Horizontal reaction

**Mechanisms**  
**Механизмы**

MBW 3

									hp	kW	
											
	25 PC 13	m/min	8,2	33	66	4,1	16,5	33	25	18,4	323 m
		t	2,5	2,5	1,3	5	5	2,6			
	4 D3 V3	m/min	15 - 30 - 58						4	3	
	RCV 60	rpm	0 → 0,8						8	5	
	ZF RT 324	m/min	26						2 x 4	2 x 2,9	
CEI 38  IEC 38			kVA								
400 V (+6% -10%) 50 Hz			25 PC : 35 kVA								

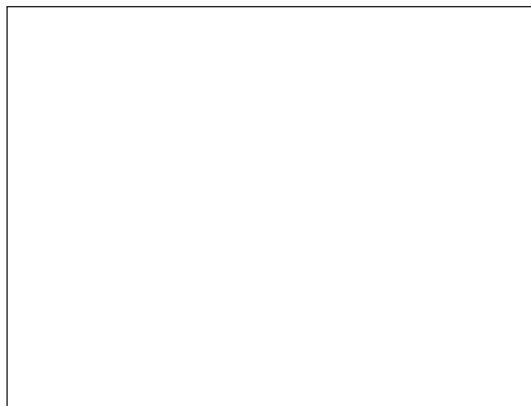
**EN**

-  Hoisting
-  Trolleying
-  Slewing
-  Travelling



This commercial document is not legally binding.  
For any technical information, please refer to the corresponding instructions.

Этот коммерческий документ не является юридически обязательным.  
Для получения технической информации, см. соответствующие инструкции.



MCi85 A/B  
Réf. 2009 45 MBW 5



**Asia-Pacific Factories**

China • No.55 East Zhen Bei Road, Zhangjiagang Economic Development Zone (South), Jiangsu Province, China 215618  
Tel 86 512 58780 088 Fax 86 512 5878 0098

India • 72-76, Mundhwa Industrial Estate, Pune - 411 036, Maharashtra, India Tel 91 20 6644 5500 Fax 91 20 6644 5599

**Regional Headquarters**

Americas • Manitowoc, Wisconsin, USA • Tel 1 920 684 6621 Fax 1 920 683 6278

Europe, Middle East & Africa • Ecully, France • Tel 33 472 18 2020 Fax 33 472 18 2000

Asia Pacific • Shanghai, China • Tel 86 21 6457 0066 Fax 86 21 6457 4955